

# CONCEPTUALIZING "SLOW GLOBAL RISKS"

## NAVIGATING THE COMPLEX LAYERS OF TRANSNATIONAL SOCIAL PHENOMENA IN EASTERN EURASIA

### Opening Speech

Hiroki OKADA (Kobe University)

### Session 1 Infrastructures of Illicit Asia:

#### Scam Centers and the Reordering of Global Risk

Organizer Masao IMAMURA (Yamagata University)

Presentation 1 Sharon Ingrid KWOK (Western Sydney University)

From Junkets to Scam Compounds:

How Chinese Criminal Ecosystems Transplanted into Southeast Asia

Presentation 2 XU Peng (University of Manchester)

Scam Logistics Building and Governing the Digital Illicit Economy in  
China–Southeast Asia Borderlands

Presentation 3 CHEN Yanyu (National Tsinghua University)

Moving Bricks: Money-Laundering Practices in the Online Scam Industry

Comment Kota WATANABE (New York University/JSPS)

### Session 2 Connection and Disconnection in Digital Spaces

Organizer Ami RAMIREZ (Kobe University)

Presentation 1 Aldrie Alman Drajat (Universitas Indonesia)

Inter(net)subjectivity in Politics of Japan:

Japanese and Indonesian Youth Civic Participation on Social Media

Presentation 2 Yosri RAZGUI (Waseda University)

When the Ritual Goes Digital: Japanese Football Supporters in Times of Covid-19

Presentation 3 Mattias VAN OMMEN (Doshisha University)

Slow Approaches to Digital Connection:

Chokketsu, Blacklists, and Gendered Intimacy in Japanese Online Games

Comment Taichi UCHIO (Shizuoka University of Art and Culture)

### General Discussion

**FEBRUARY 21, 2026 | 1:00PM-5:45PM**

**4F CONFERENCE ROOM, Bldg. E, TSURUKABUTO 1st  
CAMPUS, KOBE UNIVERSITY**

CONTACT: Takahiro TOMITA (tomitaka@people.kobe-u.ac.jp)

REGISTER NOW



Table of contents

Table of contents.....	1
Rationale of the symposium.....	3
Session Description and Abstract .....	5
Session 1.....	5
Session2.....	8
Biographies .....	12
Map .....	16

# Conceptualizing "Slow Global Risks"

Navigating the Complex Layers of Transnational Social  
Phenomena in Eastern Eurasia

**Date:** Saturday 21 February 2026 1:00pm-5:45pm (JST, UTC+9)

**Venue:** Large Conference Room(E401), Bldg. E 4th Floor, Tsurukabuto 1st Campus, Kobe  
University <https://www.kobe-u.ac.jp/en/campus-life/maps/tsurukabuto1/>

**Organizer:** East Eurasian Studies Project (EES)

Research Institute for Promoting Intercultural Studies, Kobe University  
<https://ees-kobe.com/>

**Program:**

**1:00-1:15**

**Opening Speech** Hiroki OKADA (Kobe University)

**1:15-2:45**

**Session 1 Infrastructures of Illicit Asia: Scam Centers and the Reordering of Global Risk**

(Organizer: Masao IMAMURA)

Presentation 1 Sharon KWOK (Western Sydney University)

Presentation 2 XU Peng (University of Manchester)

Presentation 3 CHEN Yanyu (National Tsinghua University)

Comment Kota WATANABE (New York University/JSPS)

(15min. Break)

**3:00-4:30**

**Session 2 Connection and Disconnection in Digital Spaces** (Organizer: Ami RAMIREZ)

Presentation 1 Aldrie Alman Drajat (Universitas Indonesia)

Presentation 2 Yosri RAZGUI (Waseda University)

Presentation 3 Mattias VAN OMMEN (Doshisha University)

Comment Taichi UCHIO (Shizuoka University of Art and Culture)

(15min Break)

**4:45-5:45 General Discussion**

Discussant Michiko SAWANO (Ritsumeikan University)

Chiaki TSUCHIDA (Kobe University)

(6:00-8:00 Dinner)

## Rationale of the symposium

Various social issues in contemporary society have transcended spatial and geographical boundaries, manifesting in multi-directional rather than linear patterns. For instance, the demographic crisis of declining birthrates and aging populations—a severe issue in Japan and other East Asian societies—has catalyzed labor migration and the multiculturalization of society, extending far beyond national borders and traditional regional frameworks. Consequently, these issues have become interconnected, forming "complex systems" characterized by overlapping, multi-layered phenomena.

The primary objective of this symposium is to grasp these complex, layered situations. We will take as our starting points the transnational expansion of criminal networks (Session 1) and specific social phenomena within digital spaces (Session 2). Building upon these inquiries, we aim to examine the validity, limitations, and problematic nature of framing these complex-system risks—which extend from micro-level field observations to macro-level trans-border dynamics—as "Slow Global Risks." The concept of "Slow Global Risk" is not yet an exhaustively defined term. Through this symposium, we intend to deepen and refine the utility of this perspective by engaging with specific ethnographic and empirical fields.

For the purpose of this symposium, the term is tentatively defined as follows: Generally, "global risk" refers to localized risks (such as wars, regional conflicts, or disasters) that escalate into global challenges due to advancing globalization. These may be termed "Fast Global Risks." Conversely, there are risks such as global warming, where the totality of human activity impacts the entire planet. "Slow Global Risk" pertains to the latter.

Crucially, individual human activities are not inherently risky, nor do they manifest as risks in the short term. Rather, these risks appear to be embedded within the very structures of the modern systems and societies that support such activities. While these actions often stem from individuals seeking a better quality of life, they slowly interconnect with other issues through the processes of modernization and globalization. Eventually, they emerge as political and social problems that transcend the nation-state. The process by which ambiguous factors evolve into risks through intricate pathways suggests that this is a problem of complex systems, akin to the "butterfly effect." Therefore, the perspective of "Slow Global Risk" serves as a critical lens to scrutinize the underlying ideologies of modern society and modernity itself.

"Slow Global Risks" are not confined to traditional geographical or geopolitical divisions like "East Asia." While they spread globally alongside modernization, they tend to concentrate and overlap within specific spatial domains due to historical, geopolitical, and

lifeworld (Lebenswelt) trajectories. In this symposium, we identify "Eastern Eurasia"—a sphere of networks and events spanning East, Northeast, Central, and Mainland Southeast Asia—as a region where these layers of social phenomena densely overlap. We invite panelists, commentators, and all participants to engage in a profound discussion on the efficacy of the "Slow Global Risk" approach within this context.

## Session Description and Abstract

## Session 1

<b>Infrastructures of Illicit Asia: Scam Centers and the Reordering of Global Risk</b>		
Organizer: Masao IMAMURA		
Presentation 1	Sharon KWOK (Western Sydney University)	From Junkets to Scam Compounds: How Chinese Criminal Ecosystems Transplanted into Southeast Asia
Presentation 2	XU Peng (University of Manchester)	Scam Logistics: Building and Governing the Digital Illicit Economy in China–Southeast Asia Borderlands
Presentation 3	CHEN Yanyu (National Tsinghua University)	Moving Bricks: Money-Laundering Practices in the Online Scam Industry
Comment	Kota WATANABE (New York University/JSPS)	

Scam centres have become a decisive site for understanding contemporary global risks through Asian perspectives. Their rapid expansion across China–Southeast Asia corridors demonstrates how digital infrastructures, enclave jurisdictions, financial intermediaries, and cross-border labour regimes can be assembled into powerful engines of transnational crime. These formations expose the vulnerabilities of regional economies, challenge existing regulatory regimes, and illuminate how illicit economies scale through both state and non-state infrastructures. For a symposium concerned with global risks, scam centres offer a particularly acute lens on the entanglement of cybersecurity, migration, organised crime, and geopolitical ordering in Asia.

An emerging cohort of scholars—across anthropology, geography, political science, sociology, criminology, and area studies—is now producing innovative work on these dynamics. Their research is beginning to outline a coherent field that links platform governance, borderland politics, diaspora networks, and illicit finance.

Theoretically, scam centres raise fundamental questions about infrastructural power, logistical capitalism, fragmented sovereignty, and the permeability between licit and illicit economies. This panel aims to consolidate these insights and clarify how Asian cases can reframe global risk debates.

1-1

**From Junkets to Scam Compounds:  
How Chinese Criminal Ecosystems Transplanted into Southeast Asia**

**Sharon Ingrid KWOK**, Lecturer of Criminology, Western Sydney University

The rapid emergence of scam compounds in Southeast Asia reflects the evolution of long-standing Chinese organised-crime ecosystems rather than the sudden appearance of a new, isolated criminal phenomenon. Drawing on interviews, documentary archives, and comparative analysis across various complementary studies, this presentation argues that today's scam operations constitute a "second-generation" criminal infrastructure built upon the social networks, technologies, and territorial footholds first established by Macau's junket industry.

Macau junkets provided the initial blueprint: extensive agent hierarchies, offshore betting platforms, and informal financial networks developed to move people, money, and operations across borders. These networks expanded into Southeast Asia through established social ties within Chinese diaspora communities and relationships with local business and political actors. In emerging casino zones across the region, junket-linked actors repurposed existing facilities and digital systems into scam compounds, drawing on the same elements—white-label software, call-centre labour, underground banking channels, and enclave-style spaces—to scale high-volume criminal operations.

The spread of scam compounds thus illustrates the adaptive transformation of the offshore gambling economy into a mobile, embedded, and regionally interconnected organised-crime industry, offering new insights into transnational criminal adaptation in Asia's gray zones.

1-2

**Scam Logistics:  
Building and Governing the Digital Illicit Economy in China–Southeast Asia Borderlands**

**Xu Peng**, Hallsworth Fellow at the Humanitarian and Conflict Response Institute, University of Manchester

This talk shows how "scam logistics" are built and governed across the China–Southeast Asia borderlands, arguing that online fraud compounds are not aberrations but infrastructural regimes that couple platforms, militarised enclaves, and brokerage to move

people, money, and persuasion at scale. Drawing on corridor-based analysis of flows between Myanmar's conflict-affected borderlands and regional hubs such as Yunnan/Thailand/Cambodia, I map how brokers, zonal governance, and platform routines convert illegality into predictable circulation—producing uneven development through what I call a logistics fix. The analysis traces three interlocking circuits—commodities (digital services and kit), capital (settlement rails and laundering), and people (recruitment, coercion, and labour churn)—to show how centres and margins co-produce one another via “adverse incorporation,” and why security-first crackdowns often raise risk premiums, displace harms, and entrench the very economies they target. The talk closes with theoretical implications for regulating platforms, financial intermediaries, and corridor governance.

1-3

### **Moving Bricks: Money-Laundering Practices in the Online Scam Industry**

**CHEN Yanyu**, National Tsinghua University

Drawing on ethnographic fieldwork of three money-laundering brokerage firms in Cambodia and in-depth interviews with several industry insiders, this essay examines the operations of some of the key actors facilitating financial flows for the online scam industry. The money-laundering operations for scams involve a diverse array of actors, such as account providers, money mules, and currency exchangers, typically dispersed across the globe. This essay focuses on brokerage companies and guarantee service providers, who serve as vital intermediaries connecting this illicit industry. Beyond offering diverse advertising services, they directly facilitate transactions between money launderers and scammers to earn commissions.

This brokerage process and its associated laundering practices are widely referred to by industry insiders as 'moving bricks'. By unpacking the multilayered social meanings of 'moving bricks', this essay demonstrates the agency of money-laundering intermediaries and their role in shaping illicit markets, as well as their reflections on ethics and legitimacy. I argue that while these businesses frame their involvement as simply 'matchmaking', their brokerage helps shape the rules and practices of the sector, regulating the distribution of both profits and risks. This essay also highlights how these money-laundering businesses occupy a liminal space between legality and illegality and between national and transnational financial systems, contributing to an expanding underground financial network that spans the globe.

Keywords: Money Laundering, Brokerage, Agency, Online Scams

## Session2

<b>Connection and Disconnection in Digital Spaces</b> (Organizer: Ami RAMIREZ)		
Presentation 1	Aldrie Alman Drajat (Universitas Indonesia)	Inter(net)subjectivity in politics of Japan: Japanese and Indonesian youth civic participation on social media
Presentation 2	Yosri RAZGUI (Waseda University)	When the ritual goes digital: Japanese football supporters in times of Covid-19
Presentation 3	Mattias VAN OMMEN (Doshisha University)	Slow Approaches to Digital Connection: <i>Chokketsu</i> , Blacklists, and Gendered Intimacy in Japanese Online Games
Comment	Taichi UCHIO (Shizuoka University of Art and Culture)	

The advent of the internet and digital technology has led to a marked increase in the convenience of contemporary life. Concurrently, an intangible apprehension of digital technology persists. The advent of the digital age has led to a proliferation of interactions with individuals who were previously unencountered. Concomitantly, this expansion has engendered disconcerting phenomena, such as the propagation of hate speech on social media platforms and non-physical interaction in virtual spaces. These developments have engendered a pervasive sense of vulnerability and unease, underscoring the need for a comprehensive examination of the implications of these emergent phenomena on individual and collective well-being.

The objective of this study is to examine the intricacies of communication within digital spaces and to investigate the activities that individuals engage in within these virtual environments. Although the "digital" is typically associated with speed and acceleration, this panel proposes that "slow modernism" offers a crucial lens for contemporary digital anthropology. As a concept, slow modernism challenges the view of modernity as a period defined solely by progress and rupture. Instead, it highlights the "slowing" forces and practices that have always resisted the relentless push for efficiency. This framework enables a critique of the digital world's fixation on immediacy, shifting the focus toward how digital infrastructures and data practices constitute a form of slow modernism which is characterized by long-term, incremental shifts rather than immediate crises.

This temporal perspective provides a foundation for understanding the simultaneous

emergence of profound connections and acute disconnections within online communities. We contend that the digital re-spatialization of social life is not a series of rapid ruptures, but a gradual reconfiguring of human relationality and social belonging. Through empirical case studies from Japan and Southeast Asia, we demonstrate that digital spaces are active terrains where political subjectivities are steadily forged and collective rituals are adapted. By making these latent cultural shifts visible, the panel investigates how digital practices incrementally reshape the boundaries of political integration and social inclusion, fundamentally altering the fabric of collective life.

2-1

**Inter(net)subjectivity in politics of Japan:  
Japanese and Indonesian youth civic participation on social media**

**Aldrie Alman Drajat**, Faculty of Humanities, Universitas Indonesia

This study aims to add a perspective to the contemporary political discourse in Japan by highlighting the role of the internet in youth civic participation. Survey-based research shows that Japanese youth have very low interest in politics, resulting in their low participation in general elections. In late July 2025, the right-wing Sanseitō party gained national and international attention by securing 14 seats in the upper house of the parliament, which can be considered significant for a conservative party. This study employs digital ethnography to observe how digital spaces serve as a political media for youth as part of their digital citizenship framed in globalism context. The observations indicate that young political influencers in Japan rely on emotional familiarity and simplicity of expression to promote conservative views, which differ from the traditional conservative image portrayed in formal media. The promotion by Japanese conservative influencers for elections that favor Japan can be understood as a political tool in Japan that cannot be undermined. Additionally, non-Japanese influencers— in this case, Indonesians residing in Japan—also participate in constructing conservatism based on anti-globalism discourse by exploiting news about problematic migrants in Japan, which results in some Indonesian netizens supporting conservative parties in Japan. The analysis concludes that the rise of conservatism in Japanese politics not only influences Japanese society but also impacts communities outside Japan within the context of globalism. Anti-globalism can be seen as one of the intersubjectivities shared by Japanese and Indonesian youth, which is rarely visible in mainstream mass media because the political actors portrayed by mainstream media often do not represent the youth who are closely connected to digital life and express their political views through social media.

Keywords: Youth civic participation, digital citizenship, conservatism in Japan, discourse of globalism

2-2

### **When the ritual goes digital: Japanese football supporters in times of Covid-19**

**Yosri Razgui**, Faculty of Sport Sciences, Waseda University

The outbreak of COVID-19 in early 2020 profoundly disrupted social practices that had long been taken for granted. The human body, the primary vehicle of social agency and interaction, went through a temporary redefinition as risky vector of contagion, prompting a radical renegotiation of physical proximity, social norms, and collective life. Consequently, fundamental domains such as education, work, leisure, and conviviality had to be rapidly reconfigured. Within this context, digital spaces were further consolidated as an alternative to physical interaction, enabling the continuation and transformation of cultural practices under conditions of restricted mobility and contact.

Among the activities most affected by pandemic regulations were large-scale collective events such as concerts and sporting fixtures. In particular, football matches rely heavily on embodied participation and collective ritual performance for the production of meaning, identity, and emotional engagement. In Japan, professional football stadiums, understood here as sites of contemporary ritual embedded within capitalistic leisure culture, were initially closed and later reopened under strict sanitary regulations, significantly altering supporters' modes of participation.

This study examines how Japanese football supporters adapted their ritual practices during the COVID-19 pandemic, focusing on the displacement and reconfiguration of matchday rituals into digital spaces. Drawing on the notion of ritual as a source of collective well-being and shared purpose, the analysis reveals how digital platforms became alternative ritual arenas, enabling the continuation of affective engagement with football despite physical absence from the stadium. Particular attention is paid to processes of ritual individualization within a context of neoliberal re-symbolisation of contemporary practices, a phenomenon that is deeply entangled with the ritualization of the digital self.

By exploring the shift from stadium-based to digitally mediated supporter rituals, this study highlights how digital spaces functioned not merely as substitutes for physical interaction, but also as sites for restoring well-being of and renegotiating the relationship between body, ritual, and community in times of crisis.

Keywords: COVID-19, Digital arenas, Mega-events, Rituals, Individualization

2-3

**Slow Approaches to Digital Connection:  
*Chokketsu*, Blacklists, and Gendered Intimacy in Japanese Online Games**

**Mattias van Ommen**, Doshisha University

This study contributes to the panel's engagement with slow modernism by examining how digital intimacy is negotiated through competing temporal expectations in a Japanese online game community. Drawing on long-term digital ethnography among Japanese players of Final Fantasy XIV, I focus on players who use the game-world to pursue romantic connections, particularly those who attempt to leverage the internet's capacity for rapid contact, information exchange (including verification of offline gender identity), and swift transition to offline meetings. While such practices align with popular imaginaries of digital speed often associated with dating apps, my ethnographic data reveals a strong local culture that privileges "slow" intimacy built through sustained interaction over time.

In this community, valued connections emerge through the long-term repetition of everyday activities like dungeon exploration parties, casual chit-chat, and sending digital gifts. Practices framed as *chokketsu* (direct connectors), approaches perceived as moving "too fast" toward romance, are often sanctioned through self-policing mechanisms such as social exclusion and public exposure. As a result, disconnections frequently arise not from disagreement over whether virtual worlds can foster romantic intimacy, but from divergent views on how quickly and in what manner such intimacy should develop. The dominance of slower approaches grounded within in-game contexts demonstrates that new technological affordances do not necessarily accelerate social relations, but may instead reinforce temporal norms of restraint and care.

By situating these dynamics within the panel's focus on slow modernism, I show how online games function as spaces where human relationality and social belonging are gradually reconfigured. Players often contrast these digital communities with offline institutions such as school, work, or family, emphasizing their relative freedom from status markers and player agency in creating and changing communities to suit their own purposes. Finally, the study reflects on methodology, showing that—much like the intimacies it studies—digital ethnographic fieldwork remains slow, messy, and relational, underscoring the enduring value of long-term engagement in virtual fields.

Keywords: digital ethnography, online games, Japan, gender, intimacy

## Biographies

**Hiroki Okada** (Kobe University)

TBA

**Masao Imamura** is Professor at the Faculty of Humanities and Social Sciences of Yamagata University (Japan). His research focuses on Southeast Asia—especially Myanmar—and examines religious dynamics, gender/sexual diversity, and the politics of human rights.

**Dr. Sharon Ingrid Kwok** is a Lecturer in Criminology at Western Sydney University and a leading expert on Chinese organised crime. She is the first female researcher to conduct ethnographic fieldwork inside triad societies, producing influential work on their structure, culture, and transnational expansion. Her research has been cited by major media outlets, and she served as an expert advisor to the New South Wales Casino, Liquor and Gaming Control Authority in 2019. She has published in top journals such as the *British Journal of Criminology*, *Urban History*, and *Trends in Organized Crime*. Dr. Kwok's current work focuses on the spread of triad-linked criminal networks into emerging casino economies and SEZs in Southeast Asia.

**Dr. Xu Peng** is Hallsworth Fellow at the Humanitarian and Conflict Response Institute, University of Manchester, fellow at Centre on Armed Groups, and research associate at Centre for the Study of Illicit Economies, Violence and Development (CIVAD), SOAS University of London. Her research examines ethnic conflict, rebel governance, and digital illicit economies in the China–Southeast Asia borderlands. Her work has appeared in the *Journal of Contemporary Asia*, *China Perspectives* and *Asian Studies Review*, with articles forthcoming in *Current History* and others. She is developing two book projects on borderland statecraft in Southeast Asia and the politics of the digital illicit economy. Her expertise has also led to interviews with major international media outlets such as the BBC, Washington Post, and South China Morning Post, where she provides insights into Myanmar's conflict dynamics and China's foreign policy in Southeast Asia.

**CHEN Yanyu** is a doctoral student in anthropology at the National Tsinghua University, Taiwan. Her dissertation explores how the illicit market intersects and coexists with Cambodia's political and economic systems in the cybercrime sector, breaking the sovereign state's monopoly on violence and intersecting with transnational business networks to form a global illicit network.

**Kota WATANABE** is Visiting Scholar at Robert F. Wagner Graduate School of Public Service, New York University. He is currently studying the political economy of civil wars, transnational organized crime, and humanitarian care in contemporary Southeast Asia, particularly in Myanmar, with the support of the Japan Society for the Promotion of Science. He has a decade of experience as a Japanese diplomat specialising in Myanmar and is fluent in Burmese.

**Ami Ramirez** (formerly Ami Suzuki) is a Research Fellow at the Research Institute for Promoting Intercultural Studies at Kobe University. She received her PhD from Kobe University. As a cultural anthropologist, she conducts ethnographic research examining the interplay between gender norms and women's labor practices. Her fieldwork in handicraft production workshops in Dhaka, Bangladesh, explores how women negotiate family and social norms as they enter the workforce. In her recent work, she has expanded her focus to include new forms of femininity and mobility that are emerging from women's increased participation in the urban service sector and digital spaces. Her research emphasizes the nexus of gender, labor, and social transformation in rapidly urbanizing regions.

**Aldrie Alman Drajat** is a lecturer at the Faculty of Humanities, Universitas Indonesia, and a Ph.D. candidate at the Graduate School of Intercultural Studies, Kobe University, Japan. His doctoral research examines queer migration through autoethnography. Alongside his teaching, Aldrie conducts ethnographic research on queer communities in Asia and digital culture, particularly online gaming and social media. His publications and conference presentations explore identity, belonging, and discourse in popular culture. One of his papers discusses how a Japanese mangaka redefines Muslim women's identities based on their intercultural experience by creating soft representations of Middle Eastern students through their manga *Satoko to Nada* (Satoko and Nada). As a queer researcher, he has also published reflective essays on queerness in Indonesian popular media, drawing on his experiences in both Indonesia and Japan. His latest essay, *Gemulai pun Tak Pernah Cukup* (Being Flamboyant Will Never Be Enough), reflects on his life as a gay foreigner in Japan and was published on Anotasi.org, an Indonesian non-profit curated digital literary journal. Apart from completing his dissertation, Aldrie is preparing a book chapter on queer identity formation among Southeast Asian queer players in online games, based on digital ethnography conducted during the COVID-19 pandemic.

**Yosri Razgui** is a postdoctoral researcher at the Faculty of Sport Sciences at Waseda University,

funded by the Japan Society for the Promotion of Science (JSPS). He obtained a PhD in Culture and Globalization from Kobe University in 2024. His research focuses on the anthropology of sport and contemporary rituals, with particular attention to the effects of neoliberal capitalism on contemporary ritual dynamics. In his upcoming journal article, *Rethinking Well-Being in Capitalist Value-Centered Societies: Football in Japan as Contemporary Capitalistic Ritual*, he examines the interconnections between well-being, development, and a newly proposed theoretical framework of contemporary capitalistic rituals.

**Mattias van Ommen** is Assistant Professor in the Department of Sociology at Doshisha University, Kyoto. His research focuses on the anthropological study of contemporary Japanese popular culture, especially video game cultures. He received his PhD in cultural anthropology at the University of Hawai'i at Mānoa in 2020. Originally from the Netherlands, he majored in Japanese studies at Leiden University. His work has been published in *Japanese Studies*, *Games and Culture* and *the Journal of Gaming & Virtual Worlds*, and his upcoming book, *Fantastic Intimacy* (forthcoming with Cornell University Press), is an ethnographic study of a Japanese online gaming community.

**Dr. Taichi Uchio** is an Associate Professor at Shizuoka University of Art and Culture, specializing in disaster anthropology. He has conducted fieldwork in disaster-affected regions in Japan and internationally. Since the COVID-19 pandemic, he has integrated computational approaches into his research methodology, designing automated systems for online map-based exploration that enable digital ethnographic research through review-data collection and natural language processing. By open-sourcing a Python-based program that implements this research framework, he is advancing a vision of digital public anthropology.

**Michiko Sawano** is an associate professor in the Department of Comprehensive Psychology at Ritsumeikan University. Her research focuses on the anthropological study of the body, family, and medical care. She received her Master of Arts in Anthropology from Seoul National University in 2009 and her Ph.D. in Philosophy from Kobe University in 2014. Her work has been published in *Cancer and Family Studies* in South Korea and Japan. Her upcoming edited book, *Infectious Diseases and the Governmentality of Life* (published in Japanese by Shunpūsha), includes perspectives from anthropology, history, epidemiology, and philosophy.

**Chiaki Tsuchida** is lecturer at the Graduate School of Intercultural Studies, Kobe University, Japan. She is a migration researcher whose research focuses on Japan's refugee protection and migration control. She graduated from the Graduate School of Arts and Sciences, the

University of Tokyo and received her PhD. from there in July 2022. She is the author of *Nihon no Nanmin Hogo: Syutsunyuukoku Kanri Seisaku no Sengoshi (Refugee Protection in Japan: Postwar History of the Migration Control Policy)*, which received the 9<sup>th</sup> 'Yoshino Sakuzo Research Award' in 2024, the 'Encouragement Award' from the Japan Society for International Development and the 'UTokyo *Jiritsu* Award for Early Career Academics' in 2023.

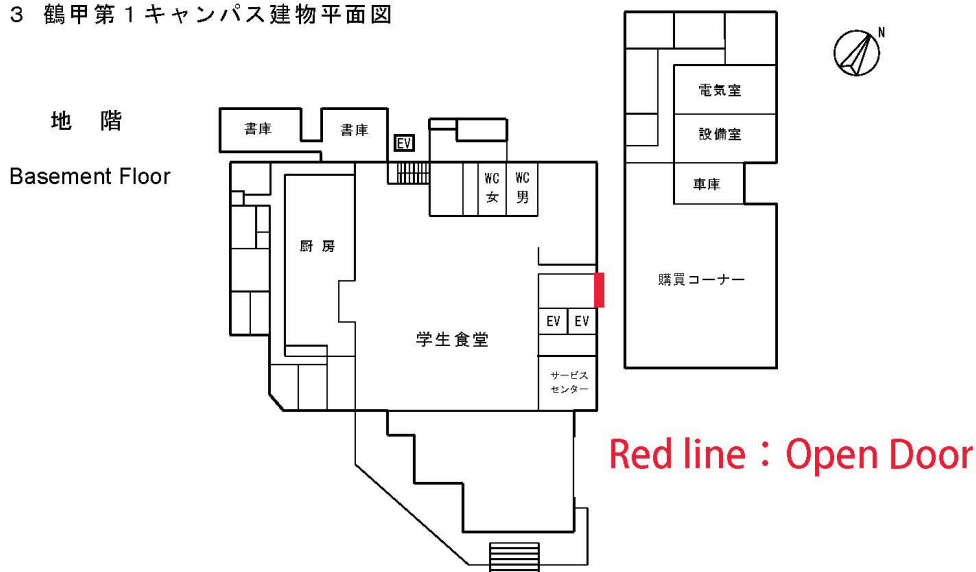
Map

Tsurukabuto 1st Campus, Building E, 4th Floor, Large Conference Room (E401)  
 1-2-1, Tsurukabuto, Nada-ku, Kobe

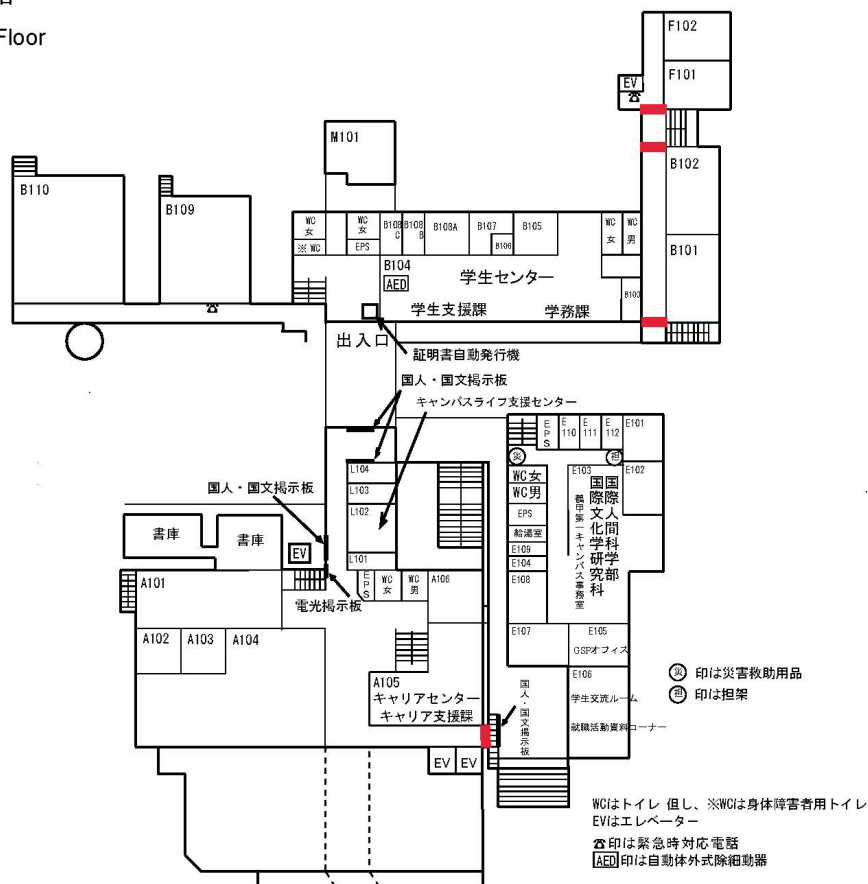


- |                                   |                        |                               |                  |
|-----------------------------------|------------------------|-------------------------------|------------------|
| バス停 (名称)<br>Bus Stop              | バイク駐輪場<br>Bike Parking | 守衛室<br>Janitor's room         | 郵便ポスト<br>Mailbox |
| 六甲台2キャンパス<br>Rokkoukai 2nd Campus | レストラン・食堂<br>Restaurant | 売店<br>Shops convenience store | ATM<br>ATM       |
| 階段<br>Stairs                      | 急な傾斜道<br>Inclination   |                               |                  |

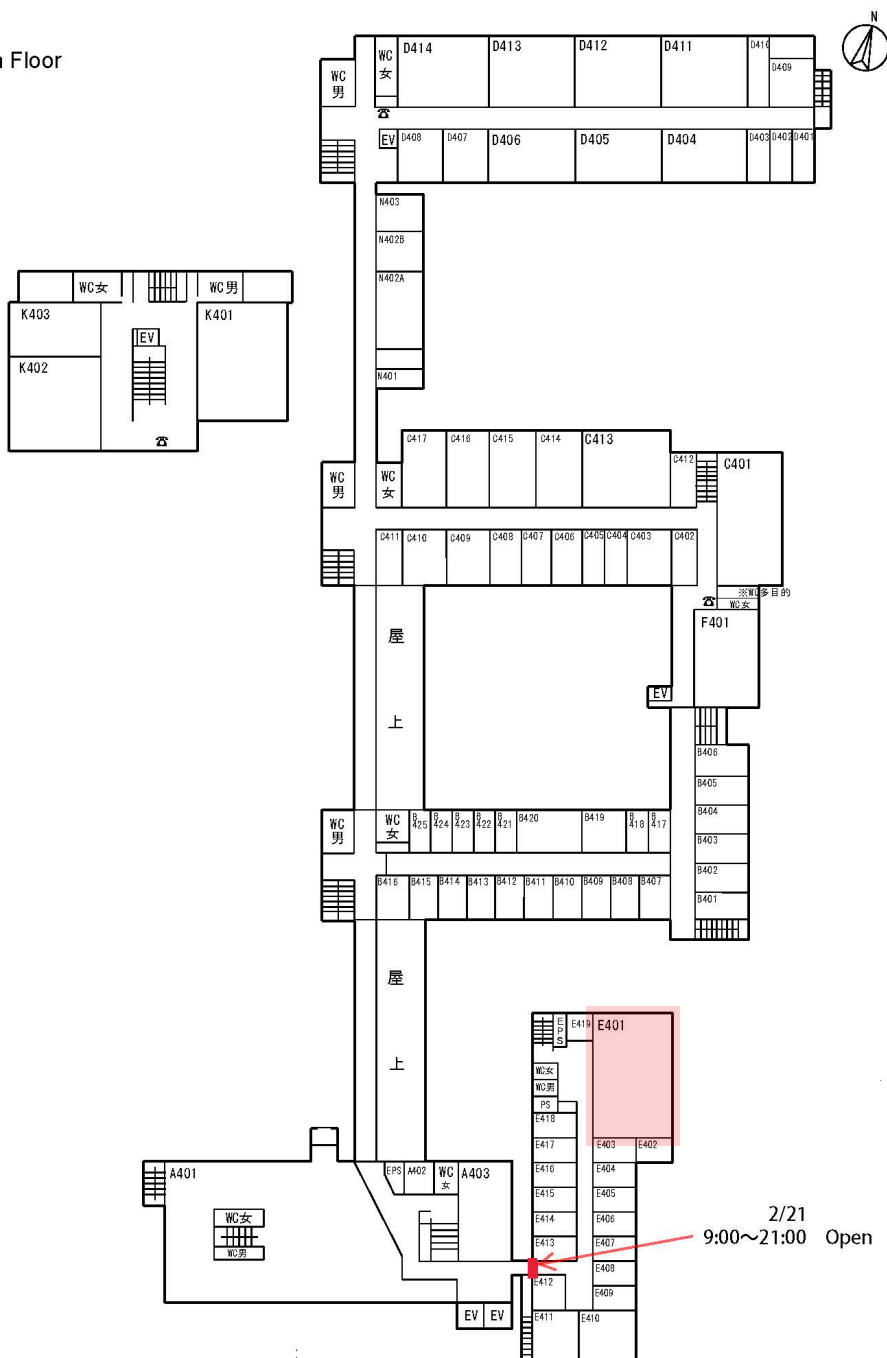
3 鶴甲第1キャンパス建物平面図



1 階  
First Floor



4 階  
Forth Floor



WCはトイレ 但し、※WCは身体障害者用トイレ  
 EVはエレベーター  
 ☎印は緊急時対応電話  
 [AED] 印は自動体外式除細動器